

HOME REMODELING & DECORATING

MONEY-WISE INVESTMENTS

7 projects to make your house more valuable—and livable!

YOUR GUIDE TO GREAT GARDENS

18 pages of ideas to update old houses

High-style decor:
• for small budgets
• at retail
• even by mail

Bonus: 9 custom landscape plans you can order



DECORATING
AT RETAIL

Gear up for spring

**Sophisticated design
gives the rooms
in this classic
log house a soft
and pretty look**



PHOTOGRAPHS BY ROBERT PERRON; STYLING, KIM FREEMAN; LANDSCAPING, NORTH COUNTRY LANDSCAPES, SOUTHAMPTON, MASS.; "MOOREWOOD" WOOD PRESERVATIVE, BENJAMIN MOORE; FIXED GLAZING, MARVIN WINDOWS; TERRACE DOORS, ATRIUM, SKYLIGHTS, ROTO; UPHOLSTERY, TABLES, AND CHAIR, NEW COUNTRY GEAR FOR GUILD HALL; QUILTS, LAURA FISHER ANTIQUE QUILTS AND AMERICANA, N.Y.C.; FOR DETAILS, SEE PRODUCT INFORMATION



Old-time log cabins were nothing like this stylish new house, above. Indoors, the two-story living room is a perfect backdrop for a sitting area in front of the fireplace, right. A high hutch supplies extra storage space, while an antique quilt emphasizes the interior balcony.

Americans love log houses! It's no wonder as their time-honored design captures our imaginations and gives us a tangible tie with the past. In addition, many models such as this striking home offer the amenities that today's discerning buyers now demand. This 2,400-sq.-ft. house, a customized version of a standard model called the "Cascade," is manufactured by Real Log Homes of Hart-



land, Vt. It was constructed in the Berkshire Mountains of Massachusetts by builder Brooks Carswell of Grist Mill Country Homes in Southamptn, Mass. The interior boasts high ceilings and spacious rooms that are filled with light from oversized windows, skylights, and clerestories. To set a new standard for decorating a log house—and one that will inspire homeowners anywhere—we turned to Kim

Freeman, a noted New York City designer and photo stylist, to decorate the interior especially for us. Kim's mission: Avoid the Ma-and-Pa-Kettle look so often associated with log houses. She did, and the results are stunning. Her choice was casual but high-style furniture pieces from New Country Gear for Guild Hall, items which are available at a retail store near you.

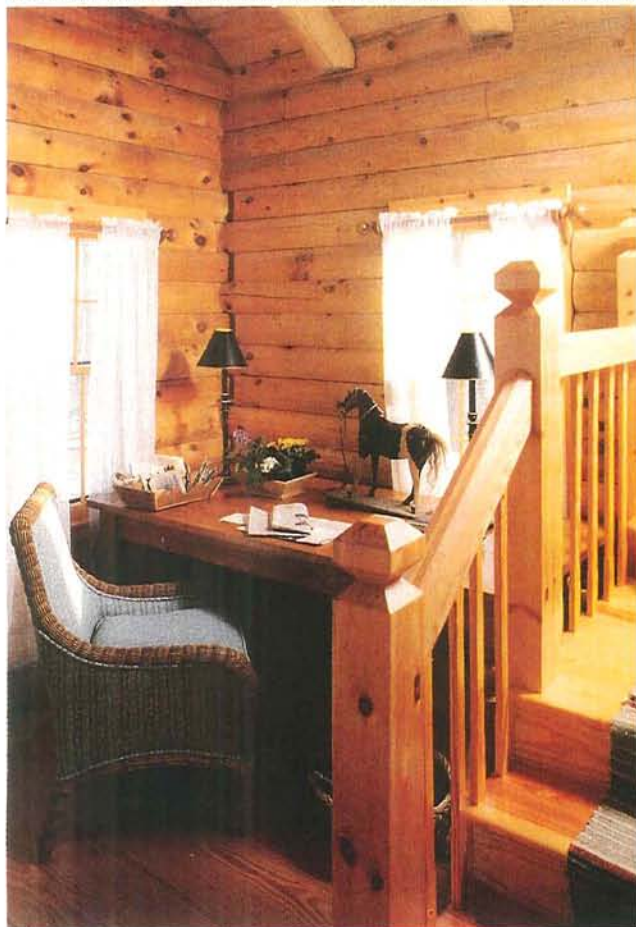
Gear up for spring

This is country with a terrific twist—spare and clean-lined!

Inspired by the rustic log walls and ceiling beams, Kim Freeman created a delightful country-style design scheme. However, while many country rooms are cluttered with an overabundance of furnishings, Kim carefully edited the interior to result in a look she calls "clean country." At the heart of this stylish living room

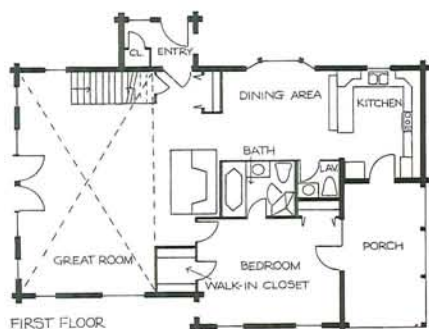
is a deft blend of no-nonsense pine tables, comfortable rolled-arm upholstered goods, and wicker chairs with elegant lines. As for colors, "I chose reds and greens, which are warm and inviting," Kim explains. She also eschewed heavy-handed accessorizing. "The beauty of this decor is the rich wood tones," she says.

UPHOLSTERY, ARMOIRE, AND TABLES, NEW COUNTRY GEAR FOR GUILD HALL; LAMPS, NEW COUNTRY GEAR FOR AINSLEY LAMPS; TROWS, NEW COUNTRY GEAR FOR THE THREE WEAVERS/FABRICO; COTTON FABRICS, NEW COUNTRY GEAR FOR RICHLOON; WOVEN FABRICS, NEW COUNTRY GEAR FOR MASTERCRAFT'S "RUSHE HERITAGE" COLLECTION; QUILTS, LAURA FISHER ANTIQUE QUILTS AND AMERICANA, N.Y.C.; ANTIQUE BASKETS AND PITCHERS, L&M FURNITURE AND COLLECTORS GALLERIES, NORTHAMPTON, MASS.; FOR DETAILS, SEE PRODUCT INFORMATION



The sitting area is in the center of the living room, resulting in an open and airy feeling eminently suitable to this large and impressive space, opposite. On the other side of the room is a secondary seating area composed of a large-scale wicker chair with rolled arms and a square pine table that is embellished with a colorful

antique quilt, above. For variety, the quilt can be changed with each passing season. A pine armoire topped with baskets is set against the front wall emphasizing the height of the sloped ceiling. Kim furnished a niche with a desk and chair to make this area an at-home office, above left. The sheer draperies are cheesecloth.



Around pine table ringed with Windsor-style chairs is right at home in the dining area, while a glass-front corner hutch is a perfect place to display treasured collectibles. With the addition of casual throw pillows, the bay-window seat becomes an inviting perch from which to relax and enjoy the outdoor view throughout the year. Frothy bed linens and delicate details encourage sweet dreams in the master bedroom. Sheets, pillow shams, and a comforter from the "Country Rose" collection top a reproduction Jenny Lind bed. A slipper chair and wicker trunk visually soften the wood walls, pine dresser, and end table. Accessories are a carefully selected—and eclectic—collection of hatboxes, baskets, old books, and ceramics on the dresser and bedside table.

DRAWINGS BY ALICE UCHIYAMA

What's the secret of



Decorating details abound throughout this house, such as the wicker tray, wood fruit bowl, large round candles, and ceramic tiles used as trivets that are displayed on the kitchen shelves, left.





just-right decorating? Classic shapes and attention to detail

DINING TABLE AND CHAIRS, NEW COUNTRY GEAR FOR GUILD HALL; LAMPS, NEW COUNTRY GEAR FOR AINSLEY LAMPS; "HICKORY" KITCHEN CABINETS, SCHROCK; BOW AND CASEMENT WINDOWS, NORCO; APPLIANCES FROM KOHLER'S APPLIANCE CENTER, GREENFIELD, MASS.; DINNERWARE, NEW COUNTRY GEAR FOR SANGO; FLATWARE, NEW COUNTRY GEAR FOR YAMAZAKI TABLEWARE; BED, BUREAU, UPHOLSTERED CHAIR BY NEW COUNTRY GEAR FOR GUILD HALL; "COUNTRY ROSE" BED LINENS, NEW COUNTRY GEAR FOR SPRINGMAID; TUB, JACUZZI WHIRLPOOL BATHS, WALNUT CREEK, CALIF.; HATBOXES, NEW COUNTRY GEAR FOR SEASONS; FOR DETAILS, SEE PRODUCT INFORMATION



Lovely leaded-glass doors on some of the cabinets break up the large amount of wood in the kitchen work area. Flowering bed linens are offset by striped pillows in the bedroom, above.



